

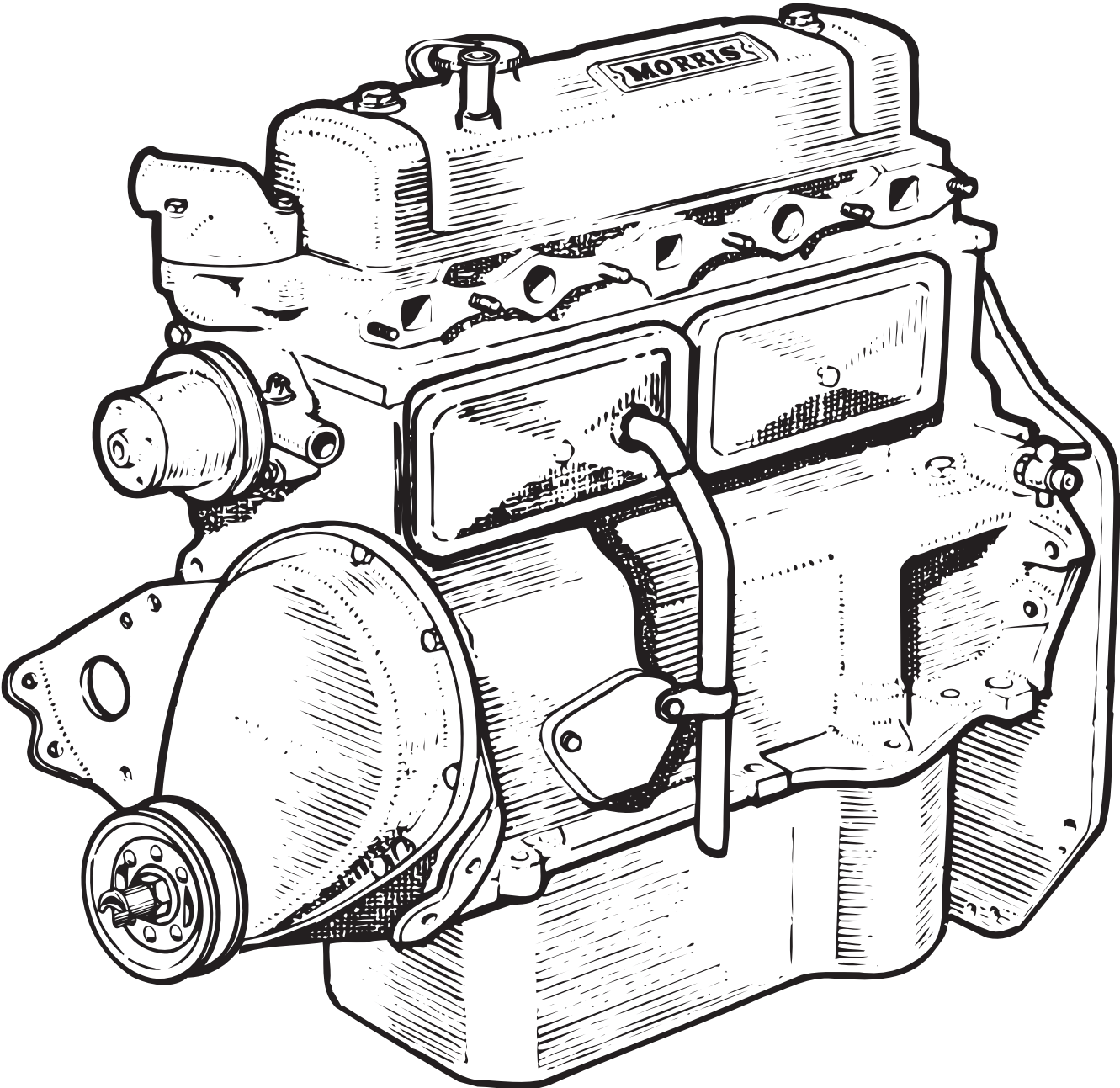
Engine

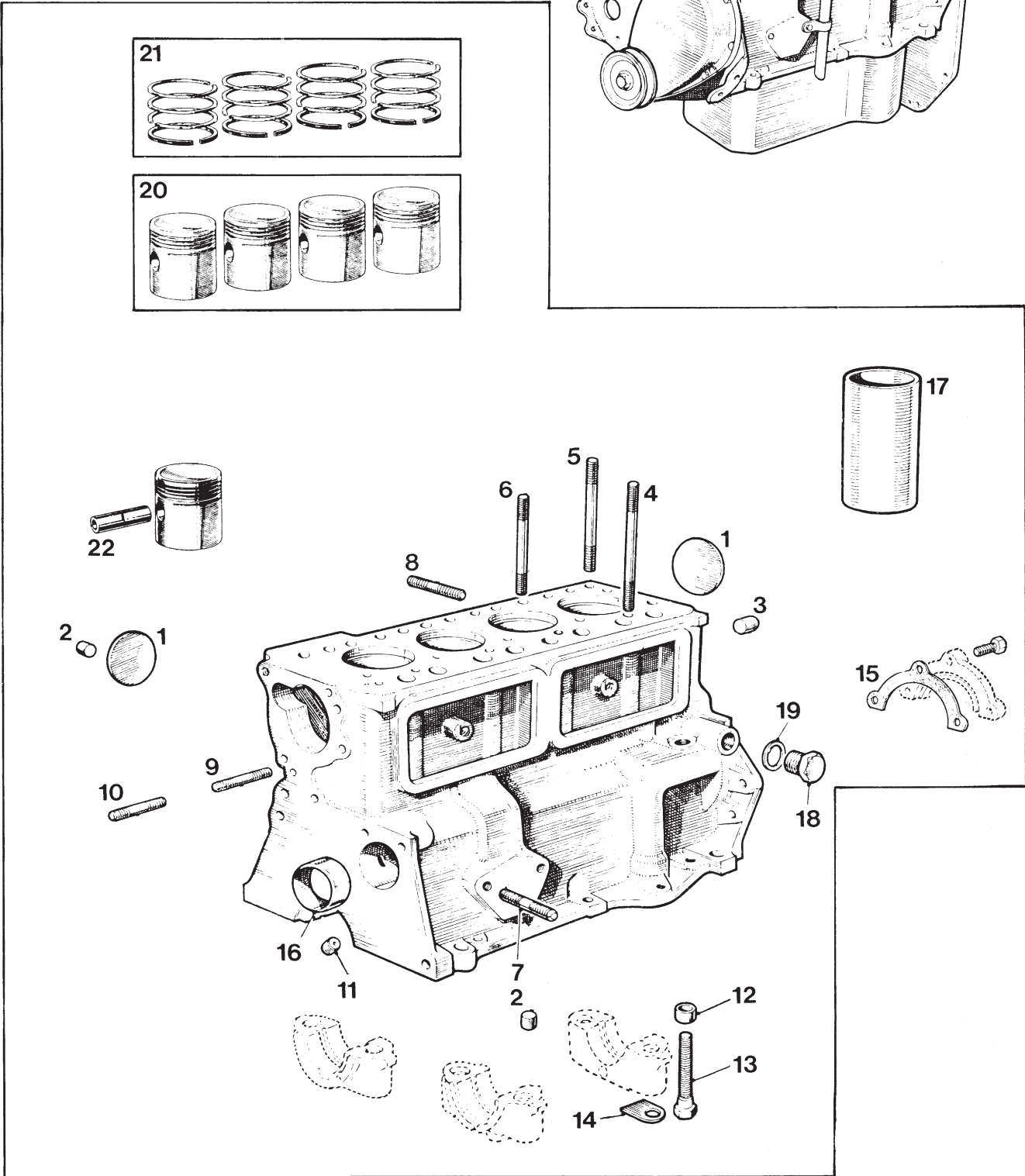
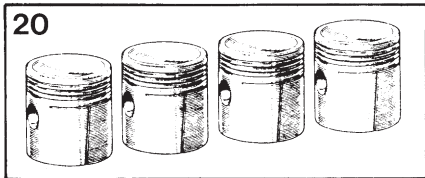
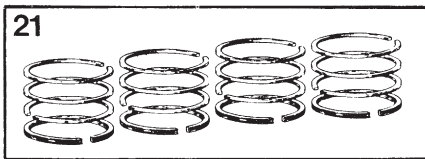
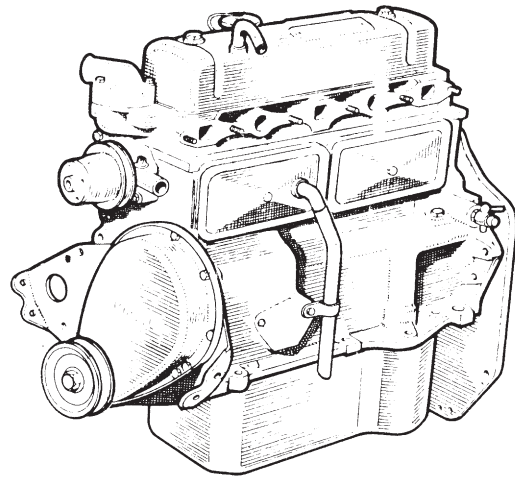
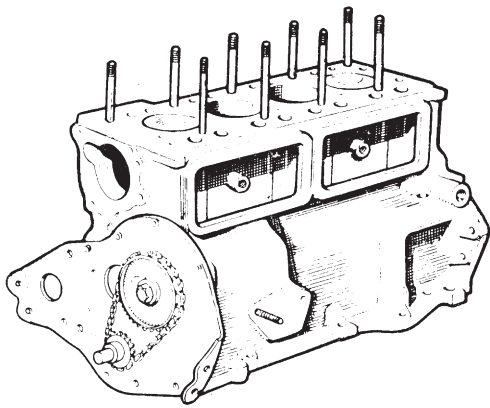
1

APHM & 8MA (803cc)
APJM & 9M (948cc)
10MA, 10ME,
10V/189E, 10V/190E

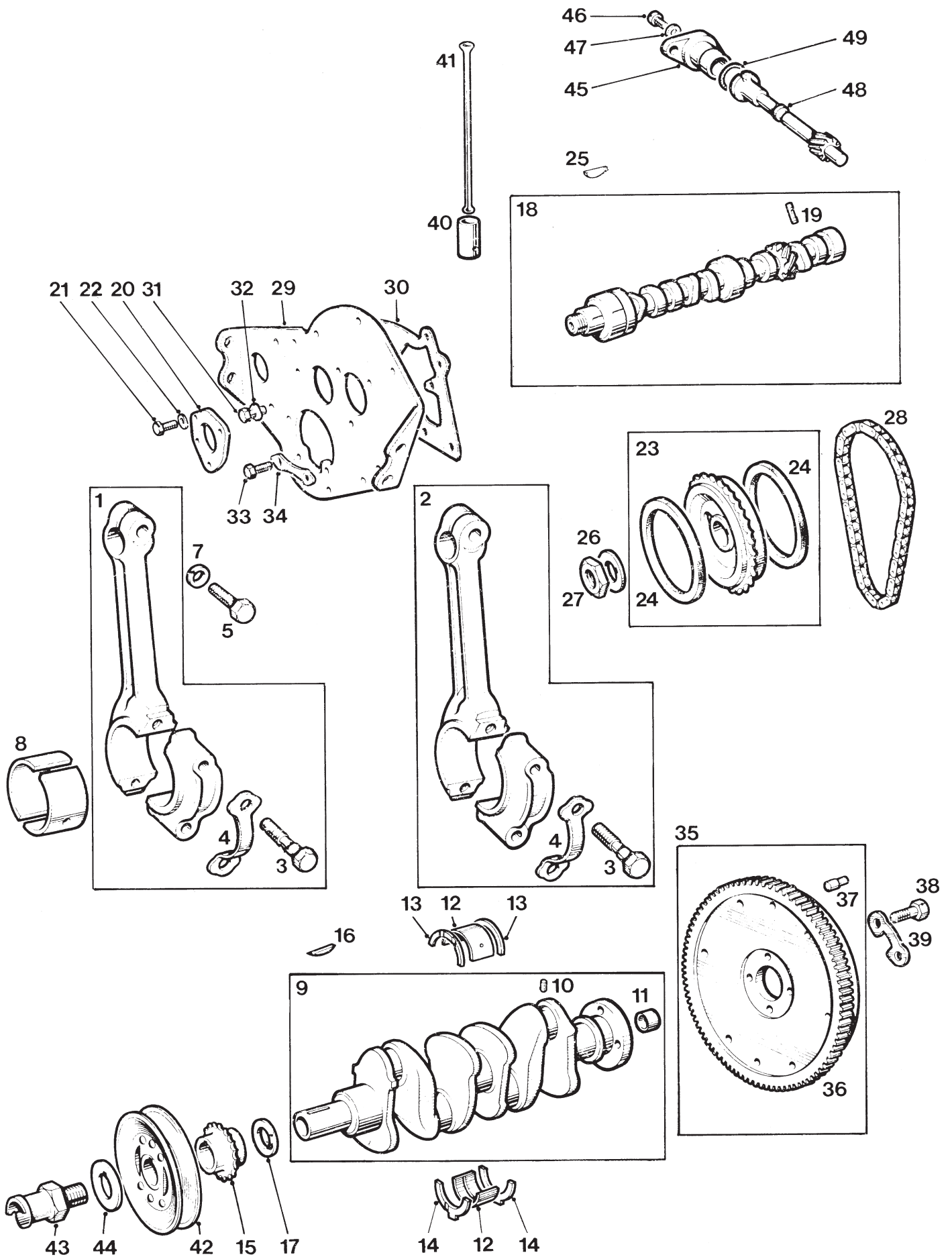
Blank

803cc

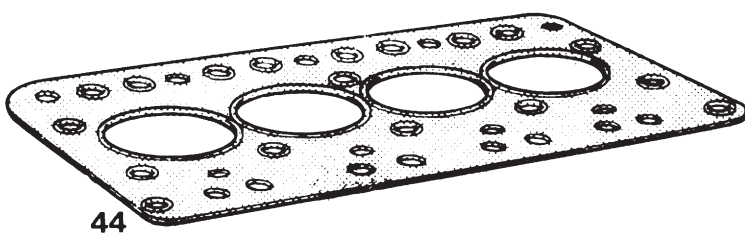
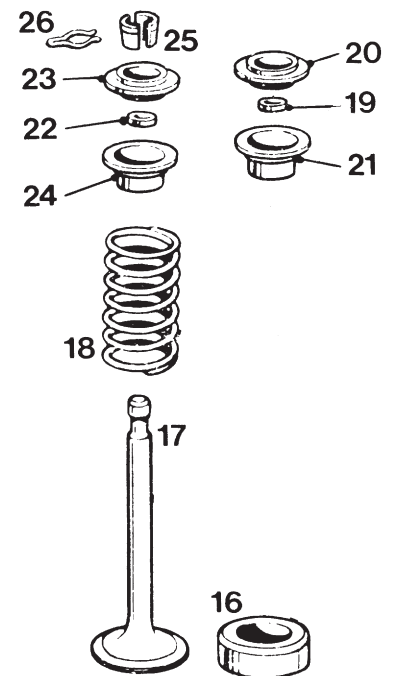
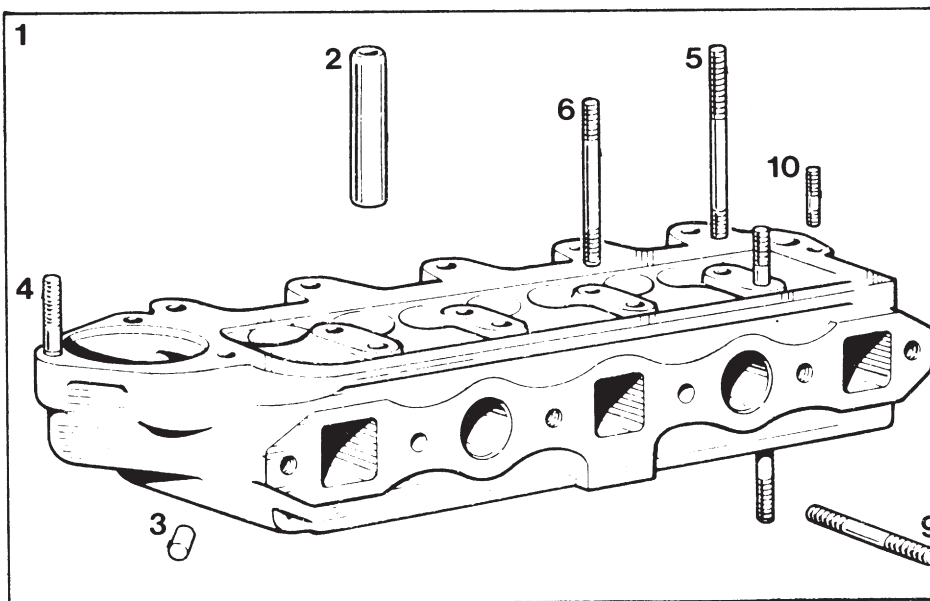
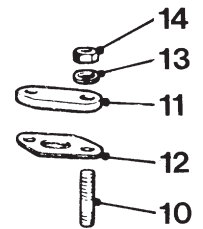
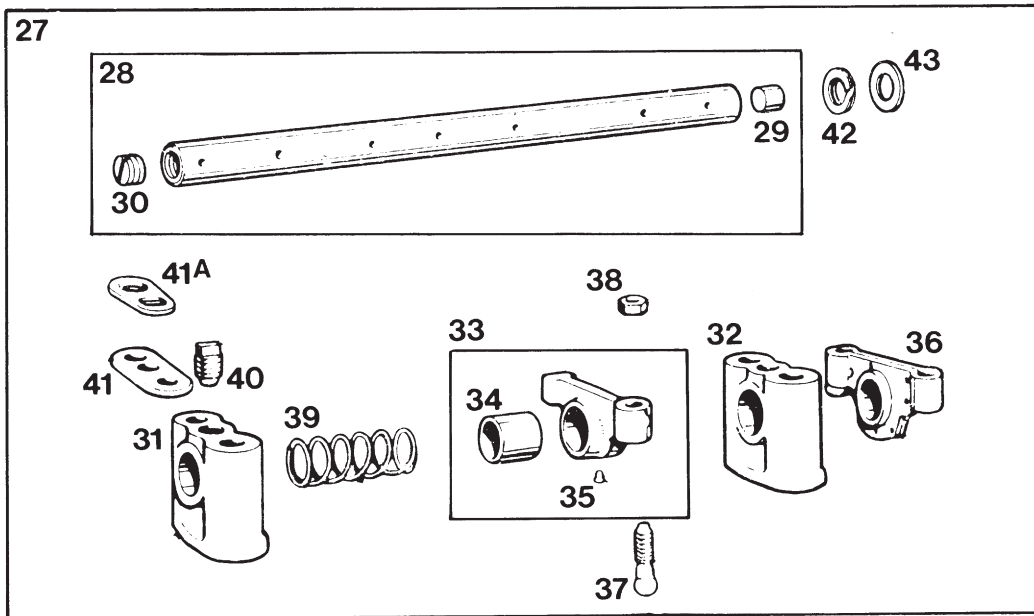
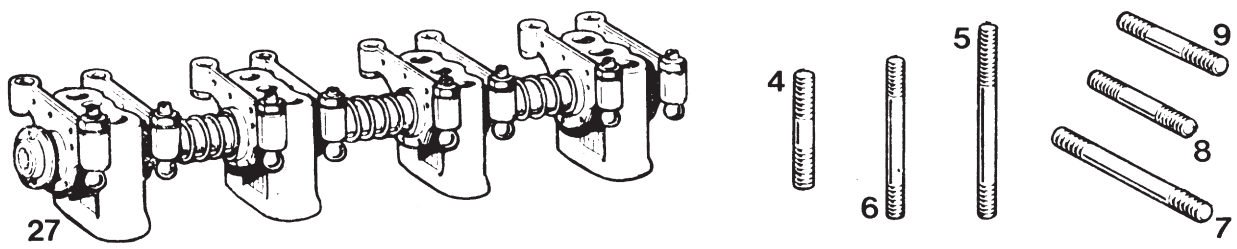




Part Number	ESM Order Ref.	Illus. No.	Description	Remarks
803cc Engine				
8M103	10M103	1	Core plug	
8M104	10M104	2	Plug - oil release valve passage	
8M105	10M105	3	Plug - oil gallery	
8M106	FIX117	4	Stud - cylinder head - long	
	Use FIX118	5	Stud - cylinder head -medium	
8M107	FIX118	6	Stud - cylinder head - short	
8M108	9M108	7	Stud - blanking plate	
8M109	10M108SH	8	Stud - dynamo bracket - rear	
8M110	8M110SH	9	Stud - water pump - long	
8M111	8M111SH	10	Stud - water pump - short	
8M112	10M110	11	Restrictor - cam shaft oil feed	
8M113	10M111	12	Dowel - main bearing cap	
8M114	10M112	13	Bolt - main bearing cap	
8M115	10M113	14	Washer - lock	
8M116	10M114	15	Gasket	
8M117	10M116	16	Liner - camshaft bearing - front	
8M118	8M118SH	17	Liner - cylinder block	
8M119	10M118	18	Plug - cylinder drain tap boss	
8M120	10M248	19	Washer	
Piston assembly				
8M121/S	8M121/S	20	Standard	
8M121/10	8M121/10	20	.010" (.254mm) o/s	
8M121/20	8M121/20	20	.020" (.508mm) o/s	
8M121/30	8M121/30	20	.030" (.762mm) o/s	
8M121/40	8M121/40	20	.040" (1.016mm) o/s	
8M121/60	8M121/60	20	.060" (1.524mm) o/s	
Ring - piston - set				
8M122/S	8M122/S	21	Standard	
8M122/10	8M122/10	21	.010" (.254mm) o/s	
8M122/20	8M122/20	21	.020" (.508mm) o/s	
8M122/30	8M122/30	21	.030" (.762mm) o/s	
8M122/40	8M122/40	21	.040" (1.016mm) o/s	
8M123	8M123SH	22	Pin - gudgeon	

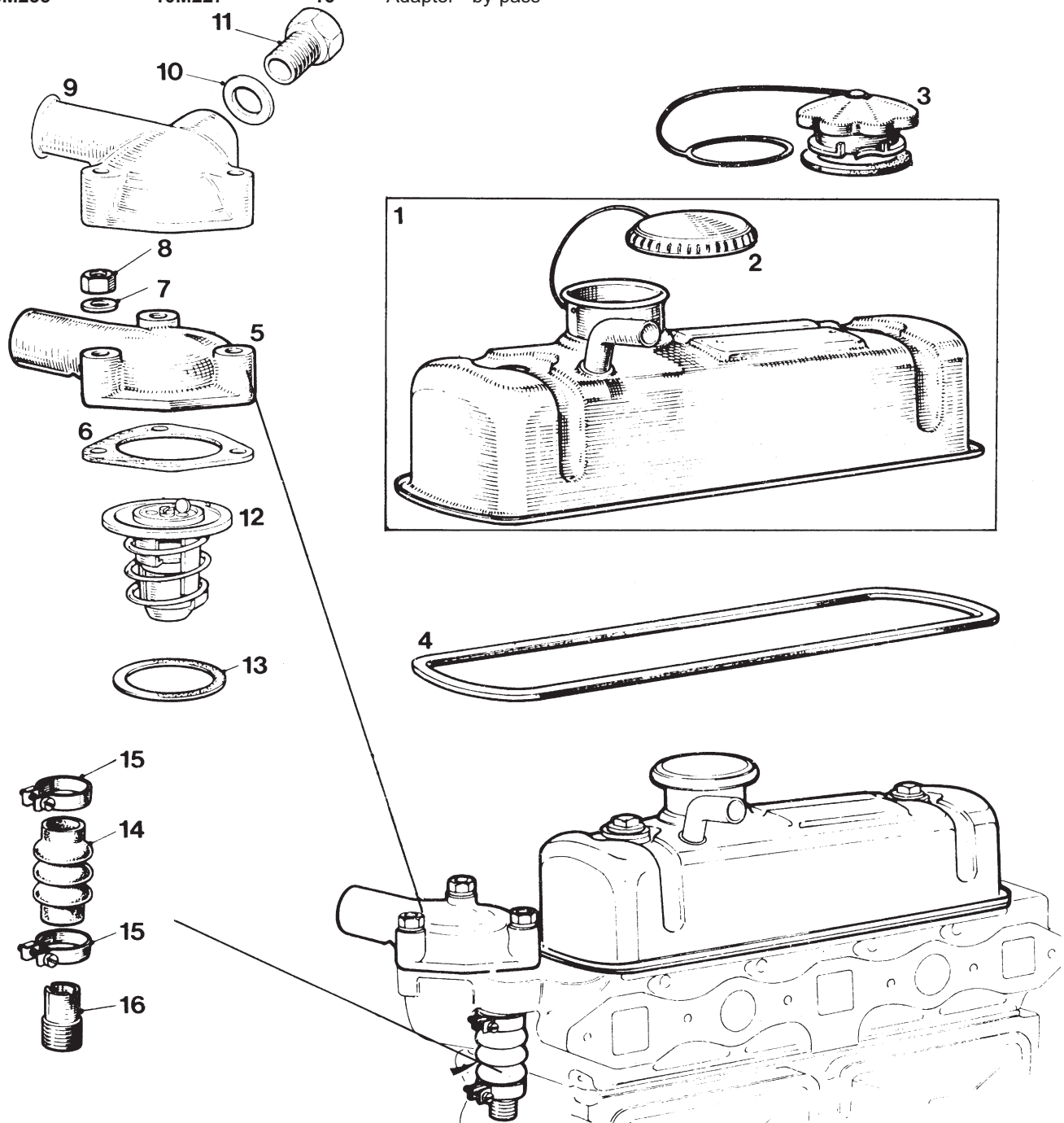


Part Number	ESM Order Ref.	Illus. No.	Description	Remarks
803cc Engine				
8M128	8M128SH	1	Rod - connecting - nos. 1 & 3 cylinders	
8M129	8M129SH	2	Rod - connecting - nos. 2 & 4 cylinders	
8M130	8M130SH	3	Screw	
8M130A	8M130A	4	Washer - lock	
8M131	8M131SH	5	Screw - clamping	
8M132	FIX157	6	Washer - spring - 5/16"	
Bearing - big end				
8M133/S	8M133/S	8	Standard	
8M133/10	8M133/10	8	.010" (.254 mm) U/S	
8M133/20	8M133/20	8	.020" (.508 mm) U/S	
8M133/30	8M133/30	8	.030" (.762 mm) U/S	
8M133/40	8M133/40	8	.040" (1.016 mm) U/S	
8M133/60	8M133/60	8	.060" (1.524 mm) U/S	
8M134	8M134	9	Crankshaft with bearings and thrust washers	
8M135	10M130SH	10	Restrictor - oil	
8M136	10M131	11	Bush	
Bearing - main				
8M137/S	8M137/S	12	Standard	
8M137/10	8M137/10	12	.010" (.254 mm) U/S	
8M137/20	8M137/20	12	.020" (.508 mm) U/S	
8M137/30	8M137/30	12	.030" (.762 mm) U/S	
8M137/40	8M137/40	12	.040" (1.016mm) U/S	
8M137/60	8M137/60	12	.060" (1.524 mm) U/S	
W2014SA	9M133S	13/14	Thrust washer set - standard	
-	9M133/3	13/14	Thrust washer set - .003" (.076mm) O/S	
-	9M133/5	13/14	Thrust washer set - .005" (.127mm) O/S	
-	9M133/10	13/14	Thrust washer set - .010" (.254mm) O/S	
8M140	10M135	15	Gear - crankshaft	
8M141	10M136	16	Key	
8M142	10M137	17	Washer - packing	
8M143	8M143	18	Camshaft	
8M144	10M139SH	19	Pin - oil pump driving	
8M145	10M140	20	Plate - camshaft locating	
8M146	FIX136	21	Screw - 1/4" UNF x 3/4"	
8M147	10M142	22	Washer - shakeproof - 1/4"	
8M148	10M143	23	Gear - camshaft	
8M149	10M144	24	Ring - tensioner	
8M150	9G227	25	Key	
8M151	10M138A	26	Washer - lock	
8M152	10M585	27	Nut	
8M153	10M148	28	Chain - timing	
Front mounting plate				
8M154	10M149SH	29	Plate - engine mounting	
8M155	10M150	30	Gasket	
8M156	FIX138	31	Screw - plate to crankcase - 5/16" UNF	
8M157	FIX157	32	Washer - spring - 5/16"	
8M158	10M138SH	33	Screw - plate to bearing cap	
8M159	10M154	34	Plate - locking	
8M160	9M155SH	35	Flywheel assembly	
8M161	9M156	36	Ring - gear starter	
8M162	8M162SH	37	Dowel	
8M163	FIX104	38	Screw - flywheel to crankshaft	
8M164	10M159	39	Washer - lock	
Tappet and push rod				
8M165	10M160	40	Tappet (camshaft follower)	
8M166	10M161	41	Push rod	
Crankshaft pulley				
8M167	10M162	42	Pulley - crankshaft	
8M168	FIX124	43	Nut - starting handle	
8M169	10M164	44	Washer - lock	
Distributor housing - spindle				
8M170	8M170SH	45	Housing - distributor	
8M171	FIX136	46	Screw - 1/4" UNF x 3/4"	
8M172	10M142	47	Washer - shakeproof - 1/4"	
8M173	10M168	48	Spindle - distributor drive	
8M174	8M174	49	'O' ring	

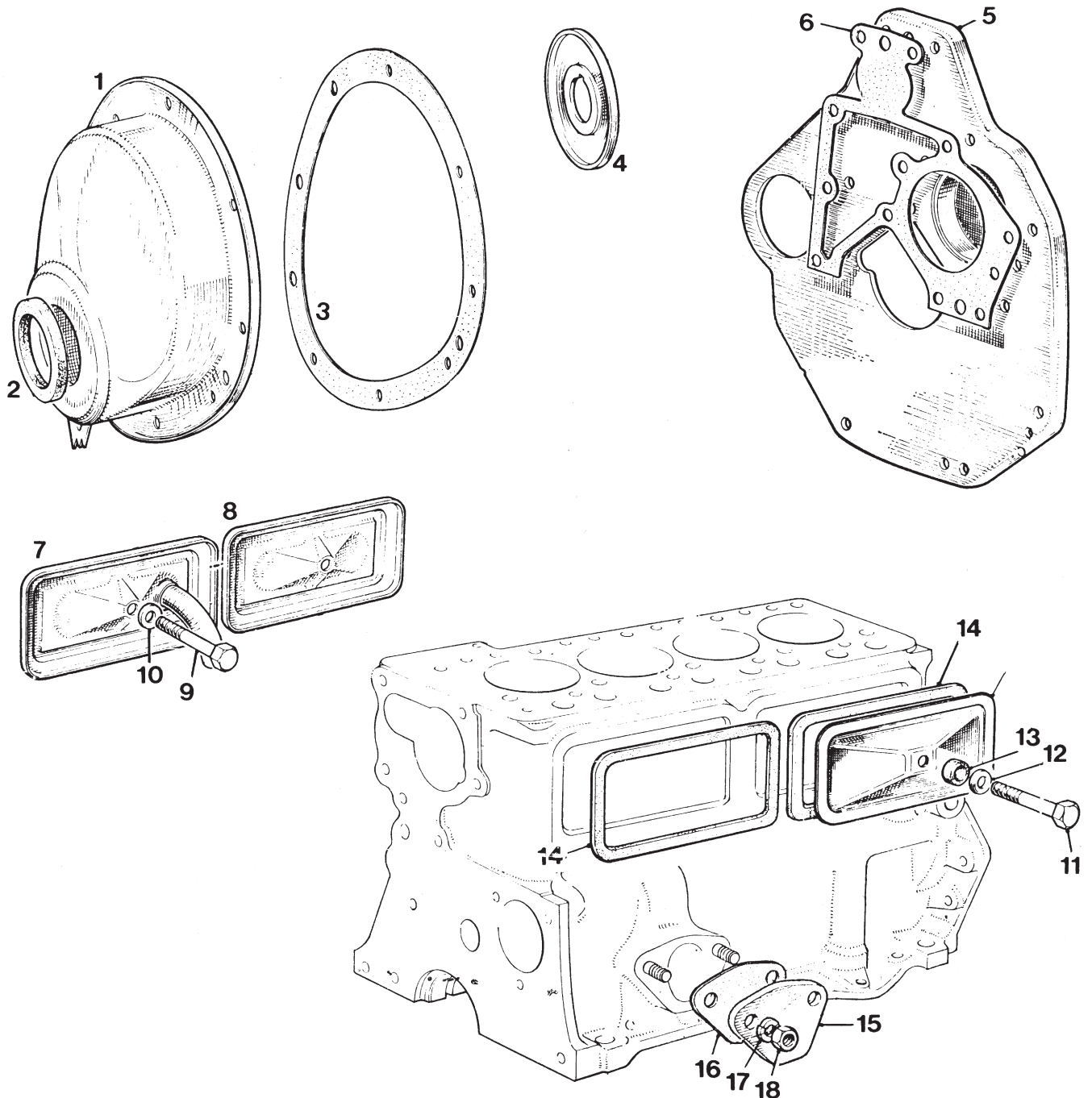


Part Number	ESM Order Ref.	Illus. No.	Description	Remarks
Cylinder head				
8M175	8M401L	1	Head - cylinder - lead free - reconditioned	
			Guide	
8M176	10M170	2	Inlet - standard	
8M178	10M171	3	Plug oil hole	
Stud				
8M179	FIX113	4	Stud - water outlet elbow	
8M180	FIX114	5	Stud - rocker bracket - long	
8M181	FIX115	6	Stud - rocker bracket - short	
8M182	FIX112	9	Stud - inlet and exhaust manifold - short	
8M183	FIX112	8	Stud - inlet and exhaust manifold - medium	
8M184	FIX112	7	Stud - inlet and exhaust manifold - long	
8M185	FIX116	10	Stud - heater control tap	
8M186	10M177	11	Plate - cover - heater control tap	
8M187	HTR104	12	Gasket	
8M188	FIX156	13	Washer - spring - 1/4"	
8M189	FIX137	14	Nut - 1/4" UNF	
Valve				
8M190	9M181	17	Inlet	
8M191	10M182	17	Exhaust	
8M192	10M183	18	Spring - valve	
8M193	10M186	19	Seal - oil	
8M194	9M189SH	20	Cap - valve spring	
8M195	8M195SH	21	Shroud - valve guide	
8M196	10M186	22	Ring - valve packing	
8M197	10M184	23	Cap - valve spring	
8M198	10M185	24	Shroud - valve guide	
8M199	10M187	25	Collet (cotter) - pair	
8M200	10M188	26	Circlip	
Shaft assembly - valve rocker				
8M201	10M189	27	Shaft assembly - valve rocker	
8M202	10M190	28	Shaft - valve rocker	
8M203	8M203SH	29	Plug - plain	
8M204	10M192SH	30	Plug - screwed	
8M205	9M197	31	Bracket - rocker shaft - tapped	
8M206	9M198	32	Bracket - rocker shaft - plain	
8M207	10M197	33	Rocker - valve - forged type (with screw)	
8M208	10M196	34	Bush	
8M209	9M200SH	35	Rivet	
8M210	10M197	36	Rocker - valve (pressed steel)	
8M211	8M211	37	Screw - tappet adjusting	
8M212	10M199	38	Nut - lock	
8M213	10M200	39	Spring - spacing	
8M214	10M201	40	Screw - locating	
8M215	10M202	41	Plate - rocker bracket locating	
8M216	10M203SH	41A	Plate - rocker bracket locating	
8M217	10M204	42	Washer - double coil	
8M218	10M205	43	Washer - plain	
Gasket				
8M219	10M208A	44	Head gasket	

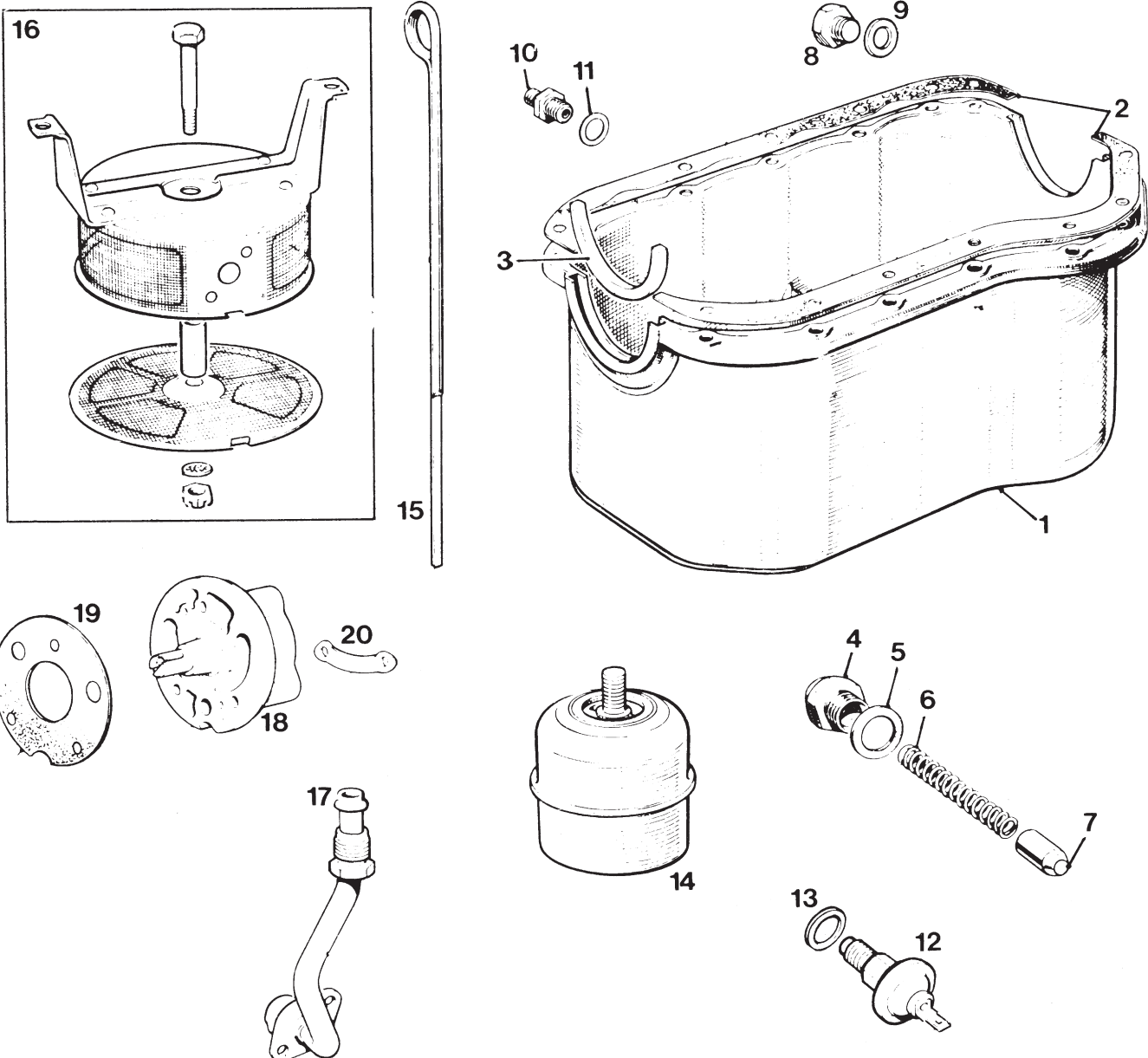
Part Number	ESM Order Ref.	Illus. No.	Description	Remarks
8M220	9M212SH	1	Cover - valve rocker	
8M221	8M221	2	Cap - oil filler (metal)	
8M222	10M212	3	Cap - oil filler (plastic)	
8M223	10M215	4	Gasket - rocker cover	
8M224	10M220	5	Elbow - water outlet	
8M225	10M221	6	Gasket - thermostat	
8M226	FIX172	7	Washer - plain	
8M227	FIX139	8	Nut - 1/4" UNF	
8M231	10M226	12	Thermostat - 82° C	
-	10M226A		Thermostat - 88° C	
8M232	10M221	13	Washer	
8M233	10M228	14	Hose - by-pass - original type with clips	
-	10M228A	-	Hose - by-pass - solid type with clips	
-	10M228S	14	Hose - by-pass - silicone	
8M234	10M229	15	Band clip - 3/4"	
8M235	10M227	16	Adaptor - by-pass	



Part Number	ESM Order Ref.	Illus. No.	Description	Remarks
8M236	8M236SH	1	Cover - front	
8M237	SS110	2	Seal - felt	
8M238	10M507	3	Gasket - cover - front	
8M239	8M239	4	Thrower - oil	
8M240	9M226SH	5	Plate - gearbox mounting	
8M241	10M502	6	Gasket - plate - gearbox mounting	
8M242	9M236SH	7	Cover - cylinder side - with vent pipe (front)	
8M243	10M510	8	Cover - cylinder side (rear)	
8M244	FIX138B	9	Screw - 5/16" UNF x 1.1/4"	
8M245	10M514	10	Washer - fibre - 5/16" ID	
8M246	FIX138C	11	Screw	
8M247	10M514	12	Washer - cup	
8M248	8M248	13	'O' ring - side cover	
8M249	10M511A	14	Gasket - side cover	
8M250	9M240	15	Plate - blanking	
8M251	9M241	16	Gasket	
8M252	FIX157	17	Washer - spring - 5/16"	
8M253	FIX139	18	Nut - 5/16" UNF	



Part Number	ESM Order Ref.	Illus. No.	Description	Remarks
8M254	10M246SH	1	Sump - oil	
8M255	GSK110	2	Sump gasket set	
8M256	Use GSK110	3	Seal - main bearing cap	
8M257	10M243	4	Nut	
8M258	10M241	5	Washer	
8M259	10M239/40	6	Spring	
8M260	10M239/40	7	Valve - oil release	
8M261	10M247	8	Plug - drain	
8M262	10M119	9	Washer - copper - 1/2"	
8M263	8M263	10	Union - oil pressure	
8M264	10M245	11	Crush washer - 3/4"	
8M265	10M292	12	Switch - oil pressure	
8M264	10M245	13	Crush washer - 3/4"	
8M266	SS102	14	Filter - oil	
8M267	10M253	15	Rod - oil dipper	
8M268	8M268SH	16	Strainer - oil	
8M269	8M269SH	17	Pipe - oil suction	
8M270	10M230	18	Pump - oil	
8M271	10M231	19	Gasket - pump - oil	
8M272	8M272	20	Plate - lock	



Part Number	ESM Order Ref.	Illus. No.	Description	Remarks
8M278	SS107A	1	Pump - water	
8M279	SS109	2	Gasket - pump - water	
8M280	10M296	3	Blade - fan	
8M281	10M297	4	Pulley - fan and water pump	
8M282	10M296	5	Fan belt	
8M283	10M298	6	Stiffener - fan blade	
8M284	FIX136	7	Set screw - 1/4" UNF x 5/8"	
8M285	FIX156	8	Washer - spring - 1/4"	
-		9	Blade - fan - for hot climates	Use 10M296 x 2
8M286R	8M286SH	10	Manifold - inlet	
8M287R	9M323SH	11	Manifold - exhaust	
8M288	FUL148	12	Gasket - inlet to exhaust manifold	
8M289	10M304	13	Gasket - manifold to head	
8M290	FIX111	14	Washer - clamping - manifold to head	
8M291	FIX172	15	Washer - plain exhaust manifold stud	
8M292	FIX110	16	Nut - brass	

